

| | |
|--|------------------------|
| Standard equipment (not including engine) | USD189000.00 |
| With 2x220hp inboard diesel engines Mercury Speed 28kn | USD269,900.00 |
| With 2x320HP inboard diesel engines Mercury Speed 33kn | USD278,000.00 |
| With 2x330HP VOLVO inboard diesel Commercial engine stern drive | USD299,562 0 0 |
| With 2xCummins 355HP sQSB6.7-355INT Stern drive | USD428,227. 0 0 |
| 2x200HP 4 stroke Yamaha outboard engines | USD222,386.0 0 |
| 2x350HP 4 stroke Yamaha outboard engines | USD251,000.00 |

1380F/42':

High speed sea coast 1380F fly bridge passenger boat. (deep V hull step waterline Sea going vessel), **Vacuum infused hull, foam with fiberglass frame inside superstrong.** Standard equipment:

32 passenger seats+1 driver seat

Toilet room

8.5KW Generator and air condition (Marine diesel model or air cool gasoline generator +marine air condition)

Outboard engines version available.

1380F fly bridge:

length 13.8m / 42.27'

Width 3.3m /10'

High speed waterline step hull

Optional

Luggage storage box on fly bridge

1580F boat Length 15.8m / 52'

Passenger seat 40+1 driver seat

Boat USD199,000.00 (plus engine)

| | |
|--|-----------------------|
| Standard equipment (not including engine) | USD199,000.00 |
| With 2x220hp inboard diesel engines Mercury Speed 26kn | USD2889,900.00 |
| With 2x320HP inboard diesel engines Mercury Speed 30kn | USD298,000.00 |
| With 2x330HP VOLVO inboard diesel Commercial engine stern drive | USD319,56200 |
| With 2xCummins 355HP sQSB6.7-355INT Stern drive | USD348,227.00 |
| 2x200HP 4 stroke Yamaha outboard engines | USD242,386 00 |
| 2x350HP 4 stroke Yamaha outboard engines | USD271,000.00 |





Fast Production Turnover Times



Comfortable seating



Raised front top vista window





Stainless steel window trim



Stainless steel door



High speed V hull with step waterline for high speed rough seas



Stainless steel Daniel anchor 10kg and windlass



Both sides have double open windows



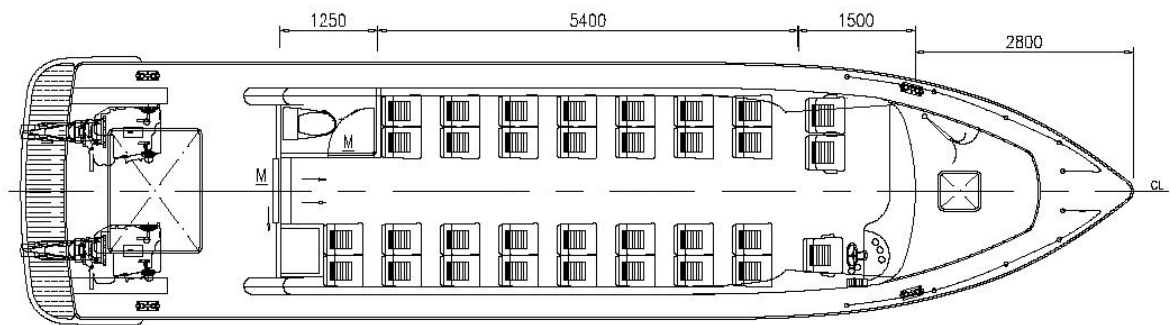
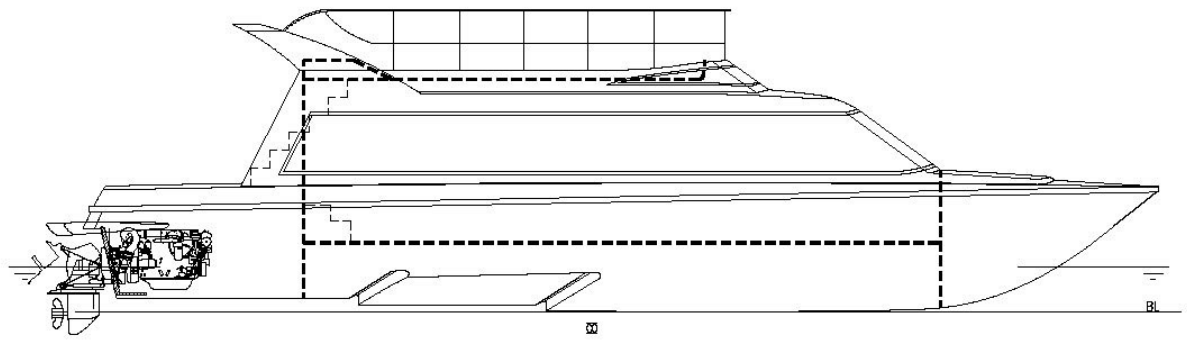
Trail High speed over 30kn with 2x200HP Yamaha outboard engines



High speed step waterline



Flybridge with high s/s fence rails for extra seating



| | |
|---------------|----------------------------|
| length: 13.8m | passengers: 30 |
| width: 3.3m | speed: 20-60km/h |
| deep: 1.85m | full displacement : 10.25t |
| draft: 0.58m | |